

THE CORPORATION OF THE CITY OF NORTH BAY

BY-LAW NO. 120-89

A BY-LAW TO AMEND BY-LAW 28-80 TO REZONE CERTAIN LANDS AT HIGHLAND ROAD AND MAPLEWOOD AVENUE FROM "DISTRICT COMMERCIAL (C.4)" TO "DISTRICT COMMERCIAL SPECIAL ZONE NO. 28 (C.4 SP. 28)" (SWEET BEE CHILD CARE).

WHEREAS the owner of the subject property has requested a rezoning;

AND WHEREAS the Council of The Corporation of the City of North Bay has ensured that adequate information has been made available to the public and has held at least one Public Meeting after due notice for the purpose of informing the public of this By-Law;

AND WHEREAS it is deemed desirable to amend the zone designation shown on Schedule "B-42" of By-Law No. 28-80 pursuant to Section 34 of The Planning Act;

NOW THEREFORE THE COUNCIL OF THE CORPORATION OF THE CITY OF NORTH BAY HEREBY ENACTS AS FOLLOWS:

1. Schedules "B-42" of By-Law No. 28-80 is amended by changing the zoning designation of the property shown on Schedule "A" attached hereto (which property is more particularly described as Lots 5 to 8 inclusive, Reg. Plan M-176 and Parcel 966 Nipissing along Highland Road and Maplewood Avenue of North Bay, shown as hatched on Schedule "B" attached hereto) from a "District Commercial (C.4)" Zone to a "District Commercial Special Zone No. 28 (C.4 Sp.28)" Zone.
2. Section 11 of By-Law No. 28-80 is amended by inserting at the end thereof the following Section 11.3.28:
"11.3.28 "District Commercial Special Zone No. 28
(C.4 Sp.28)".
11.3.28.1 The property description of this "District Commercial Special Zone No. 28 (C.4 Sp.28)" is: Lots 5 to 8 inclusive, Registered Plan M-176 and Parcel 966 Nipissing along Highland Road and Maplewood Avenue in the City of North Bay as shown on the attached Schedule and Schedule "B-42".

11.3.28.2 No person shall use land or erect or construct any building or structure in this "District Commercial Special Zone No. 28 (C.4 Sp.28)" Zone except for the following uses:

Automobile Service Station or Gas Bar Banks
Business Offices
Financial Institutions
Food Stores
Local Retail Stores
Public and Private Parking Areas
Places of Entertainment
Hotels, Motels
Professional Offices
Restaurants and Taverns
Retail Stores
Service Establishments that are not obnoxious
Dwelling Units
Clubs and Fraternal organizations.
Day Nursery or Child Care Facilities.

11.3.28.3 The use of the land or buildings in this "District Commercial Special Zone No. 28 (C.4 sp.28)" Zone shall conform to all other regulations of this By-Law except as hereby expressly varied.

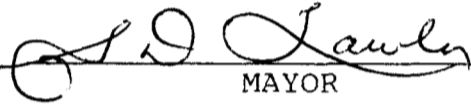
3. Section 11 of By-Law No. 28-80 is further amended by inserting "Schedule to District Commercial Special Zone No.28 (C.4 Sp.28)" as shown on Schedule "C" to this By-Law.

4.(a) Notice of this By-Law shall be given by the Clerk in the manner and form and to the persons prescribed by Ontario Regulations 404/83 not later than 15 days after the day this By-Law is passed.

(b) Where no notice of appeal is filed with the Clerk of The Corporation of the City of North Bay within thirty-five (35) days from the passing of this By-Law, then this By-Law shall be deemed to have come into force on the day it was passed.

(c) Where one or more notices of appeal are filed with the Clerk of The Corporation of the City of North Bay within thirty-five (35) days from the passing of this By-Law setting out the objection, then this By-Law shall not come into force until all appeals have been finally disposed of, whereupon the By-Law shall be deemed to have come into force on the day it was passed.

READ A FIRST TIME IN OPEN COUNCIL THE 10TH DAY OF JULY 1989.
READ A SECOND TIME IN OPEN COUNCIL THE 28TH DAY OF AUGUST 1989.
READ A THIRD TIME IN OPEN COUNCIL AND PASSED THIS 28TH DAY
OF AUGUST 1989.


MAYOR


CITY CLERK

This is Schedule " A "

To By-law No. 120-89

Passed the 28TH day of AUGUST ,
19 89 .



MAYOR


CITY CLERK



SCHEDULE

B - 42

0 100m

CITY OF NORTH BAY
ZONING BY-LAW No 28-80

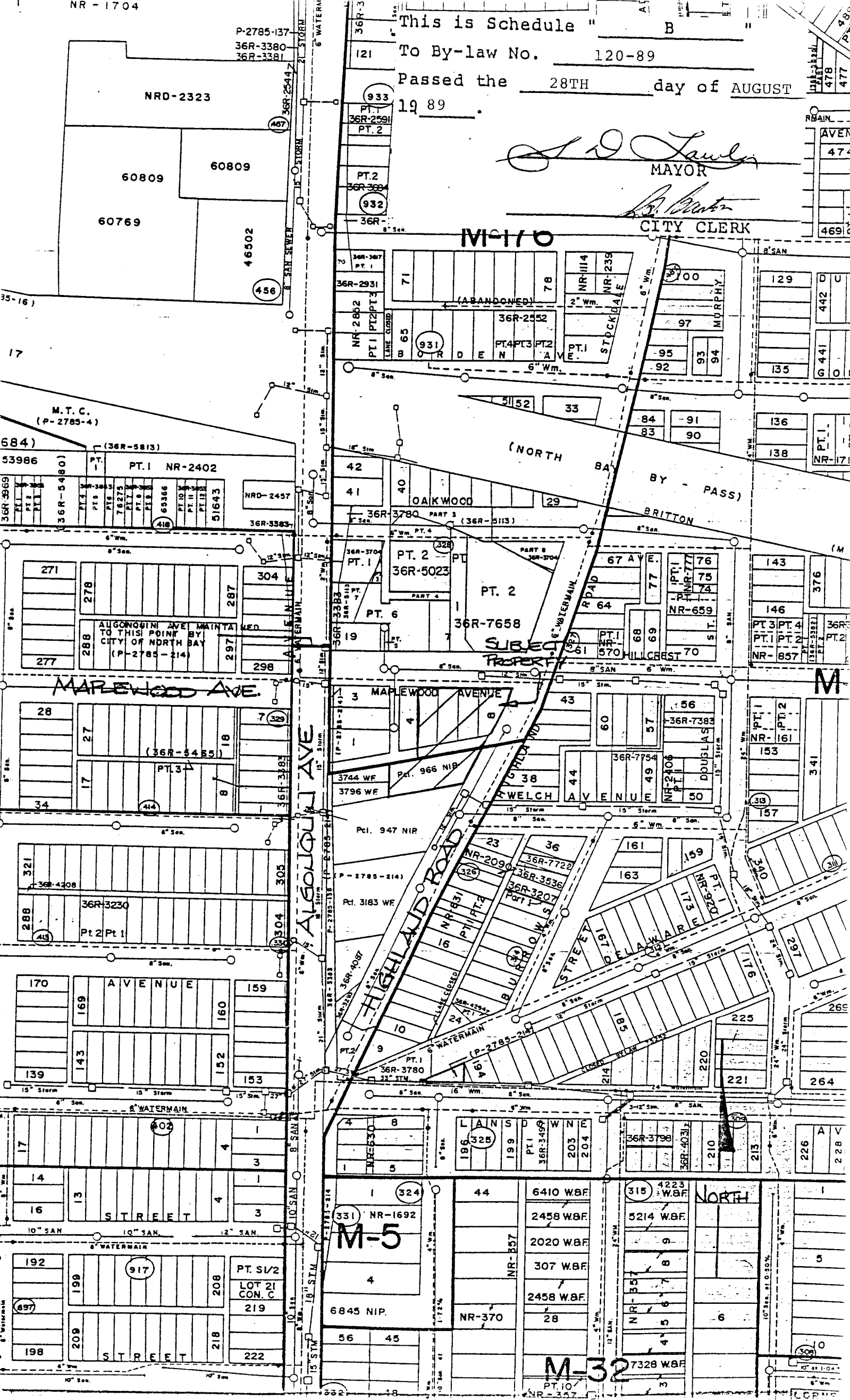
This is Schedule " B "

To By-law No. 120-89

Passed the 28TH day of AUGUST 19 89

S. D. Lawley
MAYOR

B. Blanton
CITY CLERK



| |
|-----|
| 478 |
| 477 |
| 479 |
| 474 |
| 469 |

NRD-2323
60809
60769
46502
60809
60769
46502
60809
60769
46502

M.T.C. (P-2785-4)
53986
36R-3969
36R-5480
36R-5483
36R-5484
36R-5485
36R-5486
36R-5487
36R-5488
36R-5489
36R-5490
36R-5491
36R-5492
36R-5493
36R-5494
36R-5495
36R-5496
36R-5497
36R-5498
36R-5499
36R-5500

NRD-2457
36R-3383
36R-3384
36R-3385
36R-3386
36R-3387
36R-3388
36R-3389
36R-3390
36R-3391
36R-3392
36R-3393
36R-3394
36R-3395
36R-3396
36R-3397
36R-3398
36R-3399
36R-3400

36R-2931
NR-2952
36R-2552
36R-2553
36R-2554
36R-2555
36R-2556
36R-2557
36R-2558
36R-2559
36R-2560
36R-2561
36R-2562
36R-2563
36R-2564
36R-2565
36R-2566
36R-2567
36R-2568
36R-2569
36R-2570

36R-5023
36R-7658
36R-7659
36R-7660
36R-7661
36R-7662
36R-7663
36R-7664
36R-7665
36R-7666
36R-7667
36R-7668
36R-7669
36R-7670
36R-7671
36R-7672
36R-7673
36R-7674
36R-7675
36R-7676
36R-7677
36R-7678
36R-7679
36R-7680
36R-7681
36R-7682
36R-7683
36R-7684
36R-7685
36R-7686
36R-7687
36R-7688
36R-7689
36R-7690

36R-4208
36R-3230
36R-3231
36R-3232
36R-3233
36R-3234
36R-3235
36R-3236
36R-3237
36R-3238
36R-3239
36R-3240
36R-3241
36R-3242
36R-3243
36R-3244
36R-3245
36R-3246
36R-3247
36R-3248
36R-3249
36R-3250

36R-4031
36R-4032
36R-4033
36R-4034
36R-4035
36R-4036
36R-4037
36R-4038
36R-4039
36R-4040
36R-4041
36R-4042
36R-4043
36R-4044
36R-4045
36R-4046
36R-4047
36R-4048
36R-4049
36R-4050

NR-1692
NR-370
NR-371
NR-372
NR-373
NR-374
NR-375
NR-376
NR-377
NR-378
NR-379
NR-380
NR-381
NR-382
NR-383
NR-384
NR-385
NR-386
NR-387
NR-388
NR-389
NR-390

NR-161
NR-162
NR-163
NR-164
NR-165
NR-166
NR-167
NR-168
NR-169
NR-170
NR-171
NR-172
NR-173
NR-174
NR-175
NR-176
NR-177
NR-178
NR-179
NR-180

M-5

M-170

M-32

NR-1692

NR-161

NR-370

NORTH

192

199

208

219

222

228

235

242

249

256

263

270

277

284

198

205

212

219

226

233

240

247

254

261

268

275

282

289

194

201

208

215

222

229

236

243

250

257

264

271

278

285

200

207

214

221

228

235

242

249

256

263

270

277


284

291

This is Schedule " C "

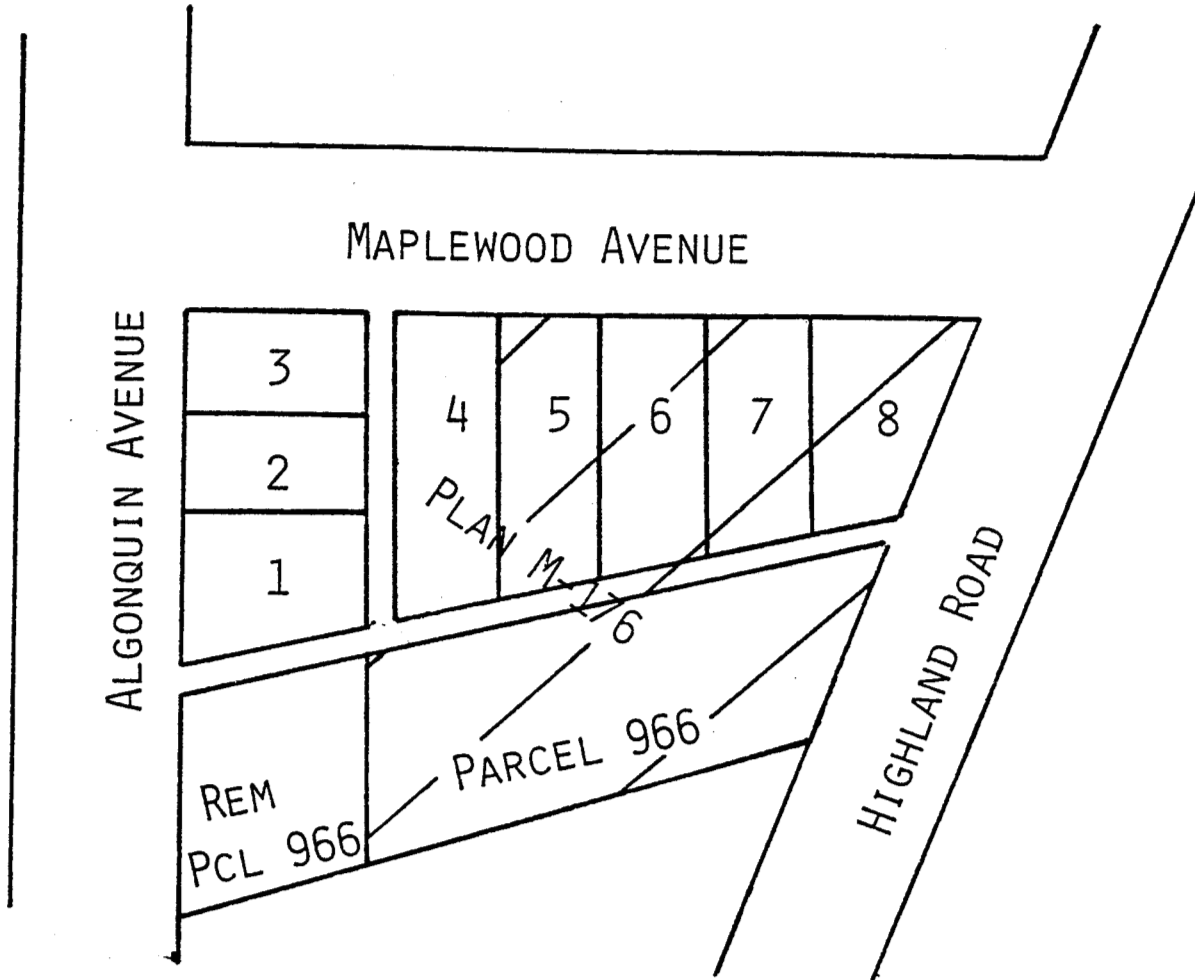
To By-law No. 120-89

Passed the 28TH day of AUGUST,
19 89.


MAYOR


CITY CLERK

SCEDULE TO " DISTRICT COMMERCIAL SPECIAL ZONE No. 28 (C.4 SP.28)"



0 50 100
FEET


NORTH